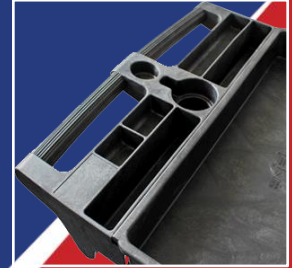


America's Powder Actuated Fasteners Specialist

## Heavy Duty Flat Handle Utility Cart

### Item #: SCF3625

- Loading Capacity: 550lbs
- Cart Size: 46.5" x 25.5" x 33.5"
- Tray Size: 36" x 24.5"
- Material: PP
- 2 Swivel Casters + 2 fixed casters
- Caster Dia.: 5"
- Carton Size: 38.2" x 27.2" x 9"
- N.W.: 45 lbs
- G.W.: 49 lbs



### Item #: SCF3016

- Loading Capacity: 550lbs
- Cart Size: 34.4" x 17.1" x 33.5"
- Tray Size: 30" x 16"
- Material: PP
- 2 Swivel Casters + 2 fixed casters
- Caster Dia.: 5"
- Carton Size: 35.8" x 18.5" x 8.5"
- N.W.: 29.9 lbs
- G.W.: 33 lbs



## Heavy Duty Utility Carts

### Item #: SC4425 Cart

- Cart Size: L 43.1" x W 24.6" x H 38.1" (Handle Height)
- Loading Capacity: 500Lbs
- 2 Swivel Casters + 2 fixed casters
- Caster Size: 5" x 1-1/4"
- N.W.: 44 lbs



### Item #: SC4425-EZA

- Fits SC4425 Cart
- Easy and fast install. No tools required.
- Also fits: Rubbermaid<sup>®</sup> FG452088BLA cart and Sur-Pro<sup>®</sup> 4426 Series carts and various other carts
- Can be locked with a padlock (Not included)
- Size: L 36" x H 23" x W 2"
- N.W.: 37 lbs



### Item #: SC4217

- Loading Capacity: 500lbs
- Cart Size: L 41.3" x W 16.7" x H 34.6" (Handle Height)
- 2 Swivel Casters + 2 fixed casters
- Caster Size: 5" x 1-1/4"
- Caster Material: TPR (Thermo-Plastic-Rubber)
- N.W.: 30.8 lbs



Engineered by  
**BLUEPOINT<sup>®</sup> TECHNOLOGY**